



www.hylineoffroad.com

1507 C West Park Avenue ~ Perkasie, PA 18944
Tel: 1.888.495.4631 ~ Fax: 215.257.4364

Proudly Made In USA

Installation Instructions:

JK Inner Fender Liners Part

Number(s): **400.300.170 & 400.300.180**

Vehicle Fitment:

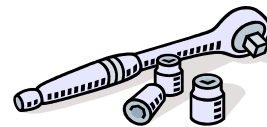
2007 - Present Jeep Wrangler
& Unlimited

Parts List

Qty:

- 1 Driver Side Inner Fender Liner Set
- 1 Passenger Side Inner Fender Liner Set
- 20 1/4"-20 Button Head Screws x 1/2"
- 2 1/4"-20 Button Head Screws x 3/4"
- 22 1/4"-20 Nylon Lock Nuts
- 16 10-32 Button Head Screws x 1/4"
- 16 10-32 Thin Nylon Lock Nuts
- 2 1/4" Thick Nylon Spacer

Tools Needed



Ratchet
3/8" & 7/16"
Sockets



7/16" Wrench
1/8" & 5/32" Allen
Wrenches



Drill & 9/32", 1/4"
Bit



Plastic Clip
Removal Tool



AntiSieve Lubrication
Touch Up Paint or
Clear Coat

Congratulations on your purchase of the Hyline Offroad Inner Fender Liners. Our Inner Fender Liners are completely manufactured in our facility located in Perkasie, PA. They are designed and engineered by enthusiasts just like you. Hyline Offroad would like to thank you for your recent purchase and look forward to serving you in the future as part of the Hyline Nation.

Hyline Offroad Staff

PLEASE READ INSTRUCTIONS BEFORE BEGINNING INSTALLATION

Rear Inner Fender Liner Install (Drivers Side)

Step 1 – If you're keeping your factory fender flares, then you will need to drill out all 6 plastic rivets from underside of the factory flare using the ¼" drill bit (See **Figure 1**). You DO NOT have to remove the actual factory fender flare to install the liners, unless of course you're installing aftermarket fenders at this time.

Step 2 – Using the clip removal tool, remove the 5 plastic push in retainer clips (See **Figure 2**). You will need to keep and reuse 2 retaining clips for installing each liner.

Step 3 – The factory plastic liner should be free to remove now. The fender flare should remain on the body.



Figure 1

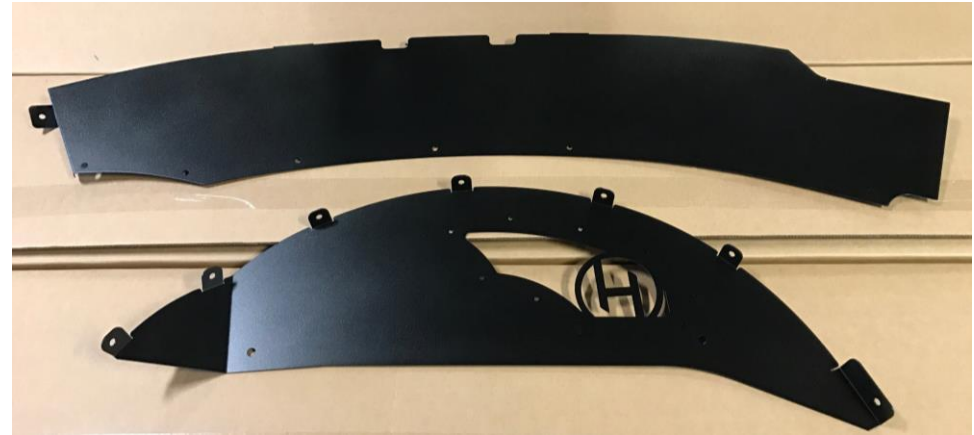


Figure 2

Step 4 – Lay Out the Driver Side & Passenger Side Panels (See **Figure 3** Directly Below).



Driver Side



Passenger Side

Step 5 – **Apply anti-seize to all stainless steel threads prior to fastening.** Using the supplied 10-32 button head screws and nylon lock nuts, assemble the perforated panel. Then, using the supplied ¼-20 x ½” button head screws and nylon lock nuts assemble the panels together as shown below in (**Figure 4**). Fasten the screws in the order shown 1 thru 7 for easy assembly. Once all screws are installed you can tighten all of them.

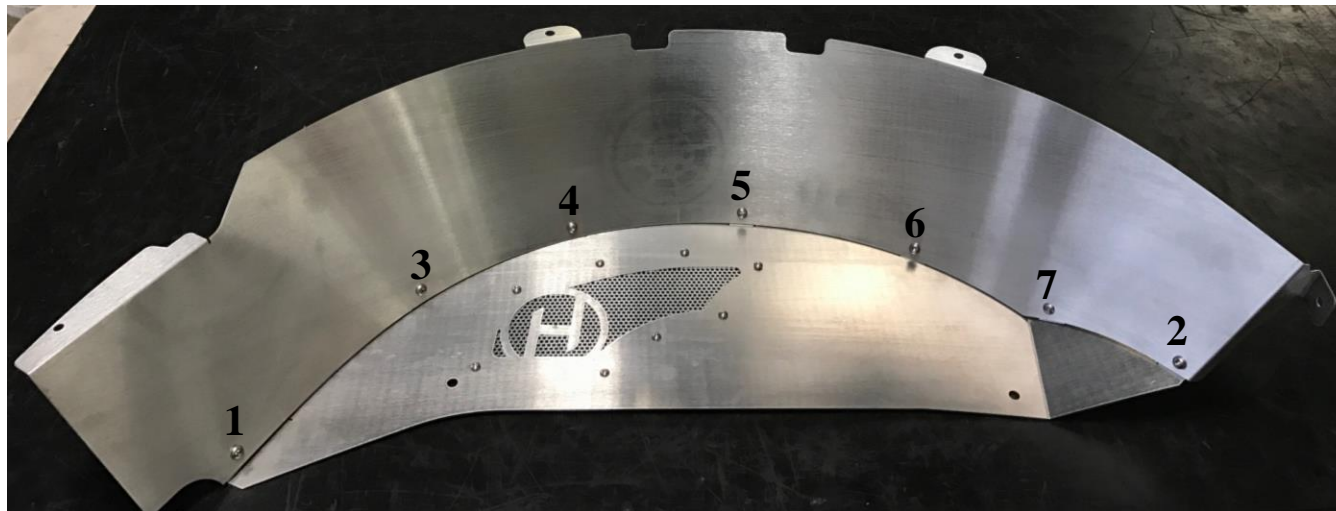


Figure 4

Step 6 – Install the assembled fender liner into the fender well and align two upper most holes on the outside of the fender well (See **Upper Arrows In Figure 5**). Install the 2 retainer clips back into the two upper holes.
(Note: Fenders have been removed for photo clarity)

Step 7 – Align two lower holes and install the supplied 1/4-20 button head screws and nylon lock nuts. The longer 1/4-20 x 3/4” screw will be used with 1/4” long nylon spacer. The nylon spacer will be installed on the backside of the fender liner in the hole closest to the ‘H’ cutout. This will take up the gap between the fender liner and the body. (See **Lower Arrows In Figure 5**)

Step 8 – Using the 9/32” bit, drill through the two remaining holes in each end of the fender liner. Push up and hold the fender liners in place to properly locate drilled holes. You’re basically just making sure the edges of your fender liner has a consistent gap between the body and the fender liner. (See **Figure 6 & 7**)

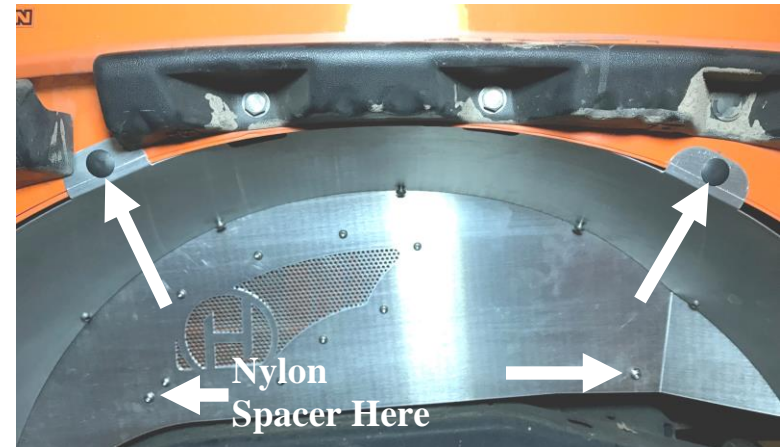


Figure 5

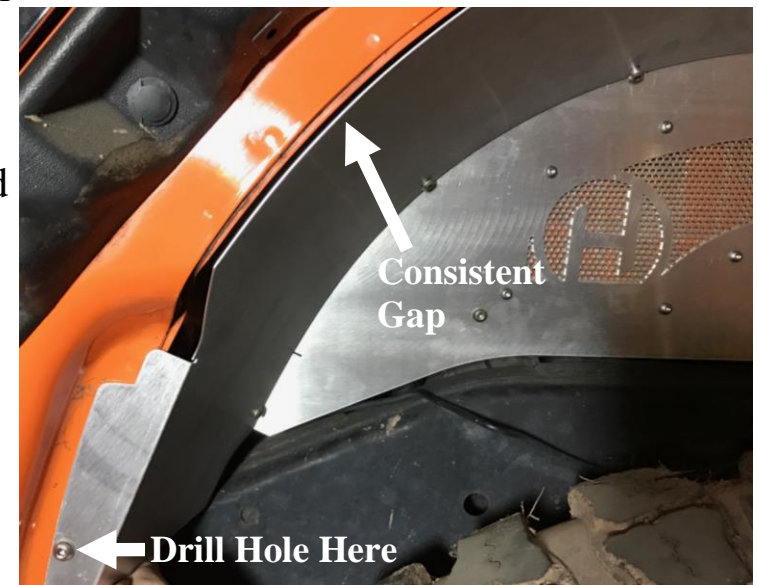


Figure 6

Step 9 – Use clear coat spray or colored touch up paint to seal raw steel on drilled holes.

Step 10 – Apply lubricating oil or anti-seize to all stainless steel threads prior to fastening. Install ¼-20 x ½” button head screws with nylon lock nuts in drilled holes and complete the installation of the driver side fender liner.

Step 11 – Repeat installation instructions for the Passenger Side.



Figure 7

Finished Installation
Shown With Bushwacker
Fender Flares

