



www.HylineOffroad.com

1507C West Park Avenue • Perkasie, PA 18944
Tel: 215/257-4323 • Fax: 215/257-4384 • 800-HYLINE 1 (800/495-4831)

Proudly Made In USA

Installation Instructions:

YJ Hood Louver Panel
Part Number: **YJ-50HLP**

Vehicle Fitment:

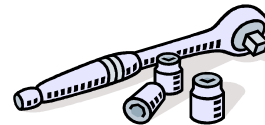
1987 – 1995 Jeep Wrangler

Parts List

Qty:

- 1 Hood Louver Panel**
- 1 Steel Template**
- 41 Nylon Locknuts**
- 2 10-32 Pan Head Screws**

Tools Needed



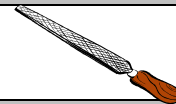
**Ratchet
7/16" Socket
Torx**



**Drill
1/16" & 1/4" Bit
1" Hole Saw**



**Jig Saw OR
Cut Off Wheel**



File OR Sandpaper



Safety Glasses

Congratulations on your purchase of the Hyline Offroad Hood Louver Panel. All of our products are completely manufactured in our facility located in Perkasie, PA. They are designed and engineered by Offroad enthusiasts just like you to be rock solid at an affordable price. Hyline Offroad would like to thank you for your recent purchase and look forward to serving you in the future.

Hyline Offroad Staff

PLEASE READ INSTRUCTIONS BEFORE BEGINNING INSTALLATION

*****BEFORE INSTALLING*****

If you ordered the Hood Louver Panel raw you should paint, anodize, powder coat, etc. now before installation onto vehicle. PEEL OFF THE VINYL PROTECTANT COVERING BEFORE PAINTING OR FINISHING. If Hood Louver Panel was ordered black powder coated your now ready to continue to step 1.

Hood Louver Panel Installation

Step 1 - As a safety precaution - Remove the hood from your vehicle before drilling or cutting. First, remove the engine grounding strap, hood light, and/or windshield washer hose from hood, if applicable. Then unbolt the 4 bolts from the hood hinges. Hood should now be free to remove from vehicle.

Step 2 - Once the hood is removed, place the hood on a flat, solid work area. Then remove the windshield u-shape tie down bracket and windshield bumper brackets. Brackets unbolt from under the hood.

Step 3 - Place steel template in the center of hood as seen in (Figure 1). **Picture may vary from your Template. Visually make sure the holes in the template are centered with the holes for the windshield tie down bracket and the template is exactly where you want it.**

Step 4 - Without moving the template re-install the U-Shape tie down bracket and tighten nuts securely, as these will hold the template in place while drilling in Step 6.

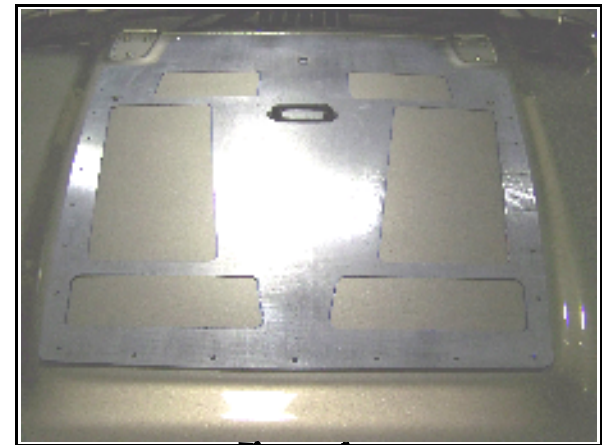


Figure 1

Step 5 - Place masking tape on the hood around perimeter of template, if desired, to prevent excessive scratching.

NOTE: USE 1/16" BIT AS PILOT HOLE FOR 1/4" BIT TO BETTER ENSURE ACCURACY!

Step 6 - Using 1/4" Bit, drill one hole through the template and hood at either corner, as shown in (Figure 2). Install and tighten the supplied 10-32 screw and nut. Then drill a second hole in the opposite corner of Template and install and tighten supplied 10-32 screw and nut. This will ensure template stays in place while drilling and cutting.

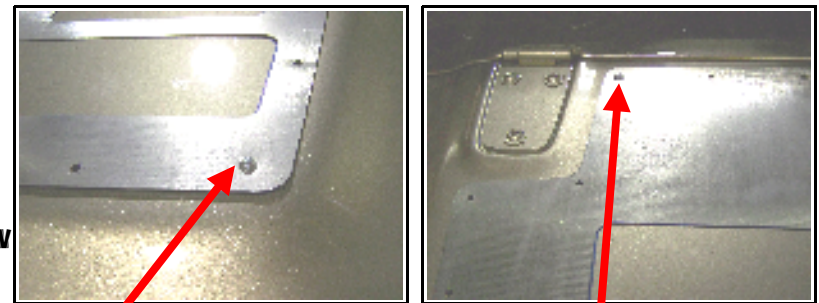


Figure 2

Drill & Install first 10-32 screw here.

Drill & Install second 10-32 screw here.

****Important** DO NOT MOVE TEMPLATE UNTIL STEP #9**

Step 7 - Continue to drill the rest of the perimeter holes with the 1/4" Bit. ****NOTE**** You will need to use the 1" hole saw to expand the center bottom hole under the hood in the support section in order to attach the nut to stud. See (Figure 3)

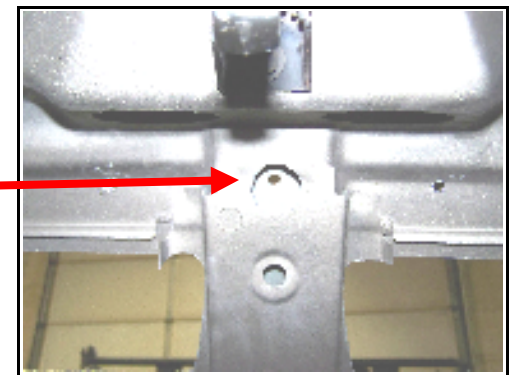


Figure 3

Step 8 - Once drilling is completed, Use 1" Hole saw and drill each corner of the 5 panels (20 times total). With template still in place, use jigsaw/cutoff wheel to cut out all 5 panels.

Step 9 - Remove template and use a file or sandpaper to deburr any sharp edges from panel cutouts and/or drilled holes. Remove masking tape also if necessary.

Step 10 - Install the Hood Louver Panel onto hood and assemble nylon locknuts to threaded studs. Tighten nuts just enough until they touch the hood steel. **DO NOT OVERTIGHTEN NUTS. Overtightening will cause distortion on Hood Louver.**

Step 11 - Re-install hood onto vehicle and re-mount the two windshield bumpers and u-shape tie down bracket. That's it, you're done.

Send your OFFROAD pictures to pics@HylineOffroad.com . If we choose any one of your pictures to be used on our website, We send you a FREE Hyline Offroad T-Shirt.



Attention

Installation instructions provided must be read and followed exactly when installing product. Failure to do so could potentially result in injury or death of any occupants in the vehicle. WEAR SEAT BELTS AT ALL TIMES WHEN DRIVING!

Though our products are rugged, they are primarily designed and built to enhance the appearance of the vehicle and will not protect from death or injury in the event of an accident. Adhere to all vehicle manufacturers specifications